

accent your interior

www.accentwall.eu



AW
ACCENT WALL
walls with style

Accent Wallpaper

*for walls that spark up
conversations everywhere*

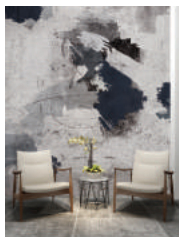
Is there a special wall in the interior you are decorating that is meant to shine and tell a story? An Accent Wallpaper will do much more than just covering a wall with a repetitive pattern: it will make it live with a special force, giving personality to the entire space.

An Accent Wallpaper is an image created by a designer and produced on superior wallpaper material to accentuate, illuminate and transform certain wall surfaces in any living space.

We can call it wall art, mural, contemporary wallpaper, creative wall covering, but it is simply graphics created from scratch, with a unique personality and a story to tell that will do much more than just decorating a wall using a repetitive pattern: it will give the place its liveliness and emotion. Because even staring at a wall can be engaging!

Collection overview

A restaurant that stuns through the wow effect of a central wall, a commercial store with an amazing fusion of products and decor, a working space with bold imagery or a hotel with a scenic reception, all are evidence of the virtually unlimited possibilities to enliven a place with an accent wall.



Abstract Painting



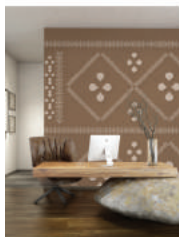
Aquatico



Aeri



Alaneo



Embroidery



Flower Power



Graphical



Hidden Forest



Motivational Wall



Origami



Petalis



Romanian Vibe

Emotion... a fascinating story... supersized art.



Alegria



Aurore



Brick Roses



Cubical



Into the wild



Ivee



Jungle



Mosaic



Typography



Victorian Garden



Wirefull



COLLECTION

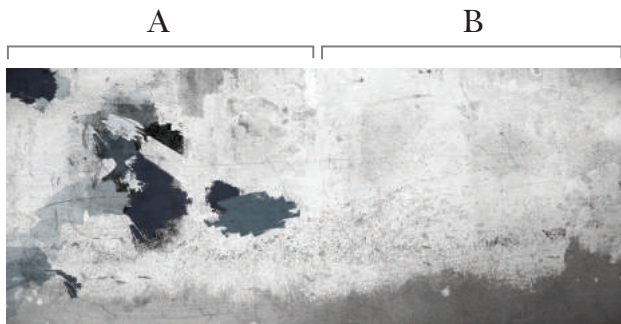
*the right wallpaper mural can
beautifully transform any interior*

Dream big! Choose a unique designer wallpaper that will make your interior stand out from the rest.

Our range is meant to put the finest art creations on your wall and tell a story that is entirely bespoke. UV-printed on the best available materials, they will stand the test of time and leave a lasting memory of the best choices of your life!

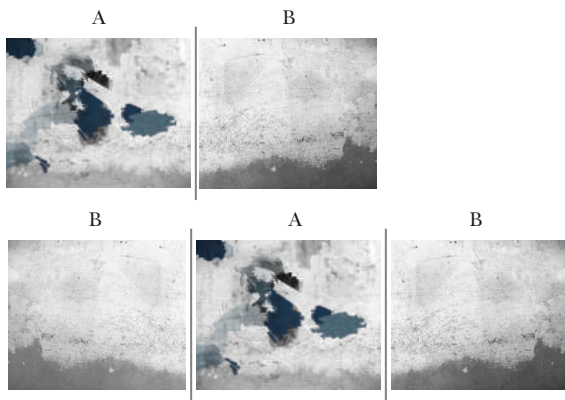
Abstract painting

AW101



Please see the image above (578 cm wide x 270 cm high - section A+B) for a better understanding of ratio and proportions.

Composition ideas:



Available colors: Midnight blue



A



Please see the image above (500 cm wide x 270 cm high) for a better understanding of ratio and proportions.

Available colors:

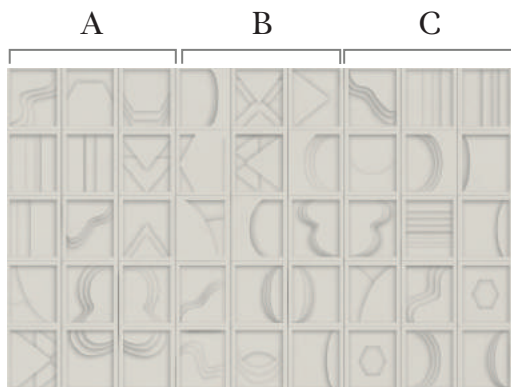


Blue



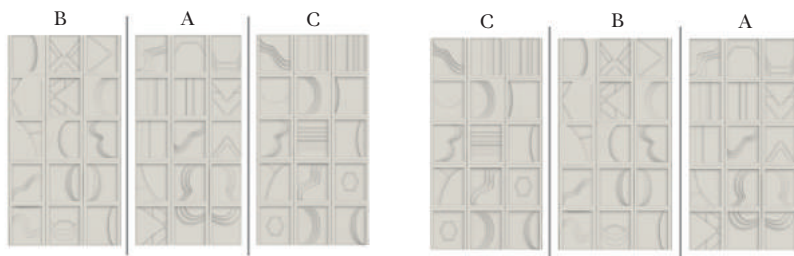
Green





Please see the image above (500 cm wide x 270 cm high - section A+B+C) for a better understanding of ratio and proportions.

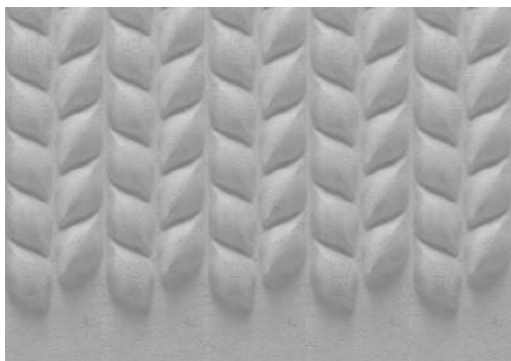
Composition ideas:



Available colors: Grey



A



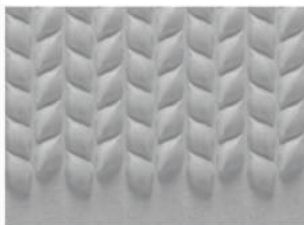
Please see the image above (385 cm wide x 270 cm high) for a better understanding of ratio and proportions.

Composition ideas:

A



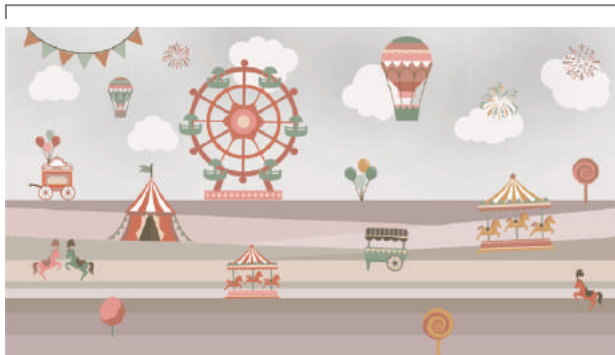
A



Available colors: Grey



A



Please see the image above (500 cm wide x 270 cm high) for a better understanding of ratio and proportions.

Composition ideas:

A



A



Available colors: Pastels



A

B



Please see the image above 610 cm wide x 270 cm high - section A+B) for a better understanding of ratio and proportions.

Composition ideas:

B

A

B



A

B

B



Available colors: Blackboard



Brick Roses

AW107

A



Please see the image above (430 cm wide x 270 cm high) for a better understanding of ratio and proportions.

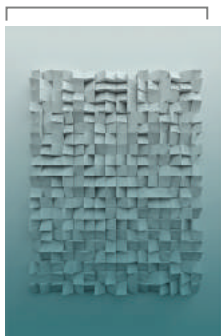
Available colors: Dusty pastels



Cubical

AW104

A



Please see the image above (191 cm wide x 270 cm high) for a better understanding of ratio and proportions.

Composition ideas:

A



A



A



Available colors:



Blue

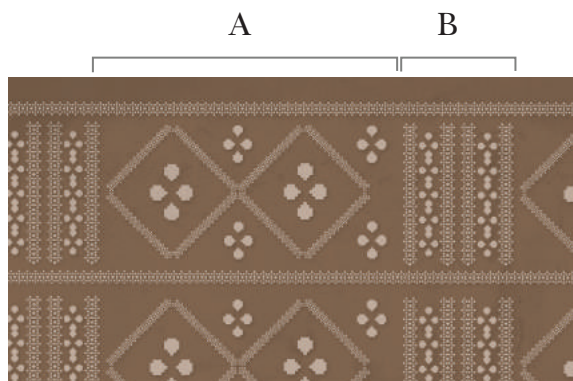


Green



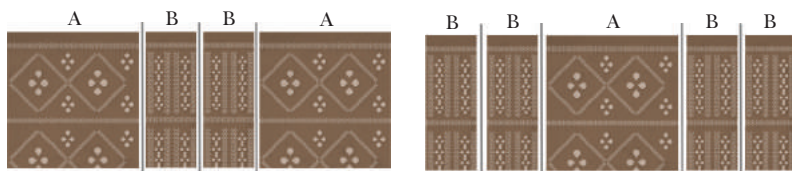
Red





Please see the image above (500 cm wide x 270 cm high) for a better understanding of ratio and proportions.

Composition ideas:



Available colors:



Earth Tones



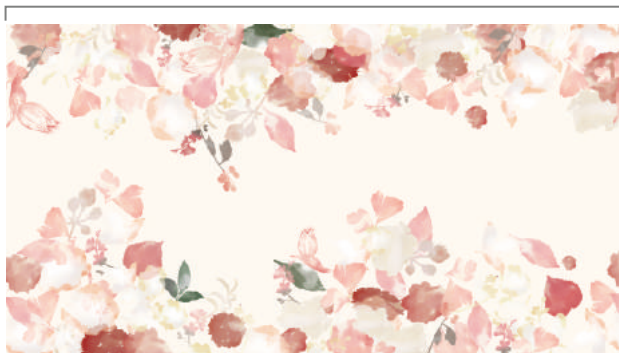
Air Tones



Flower Power

AW119

A



Please see the image above (500 cm wide x 270 cm high) for a better understanding of ratio and proportions.

Composition ideas:

A

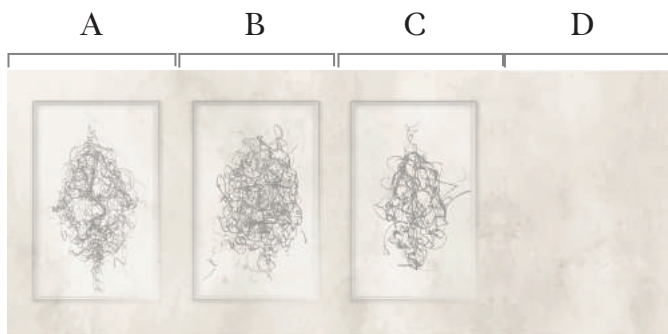


A



Available colors: Pastel Bouquet





Please see the image above (720 cm wide x 270 cm high - section A+B+C+D) for a better understanding of ratio and proportions.

Composition ideas:



Available colors: Beige



Hidden Forest

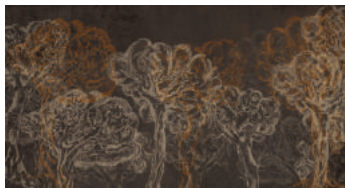
AW119

A



Please see the image above (500 cm wide x 270 cm high) for a better understanding of ratio and proportions.

Available colors:



Dark



Light



Into the wild

AW115

A



Please see the image above (400 cm wide x 270 cm high)
for a better understanding of ratio and proportions.

Available colors:



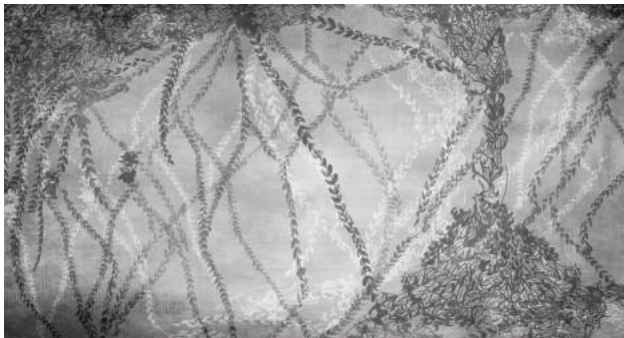
Brown



Black & White



A



Please see the image above (500 cm wide x 270 cm high) for a better understanding of ratio and proportions.

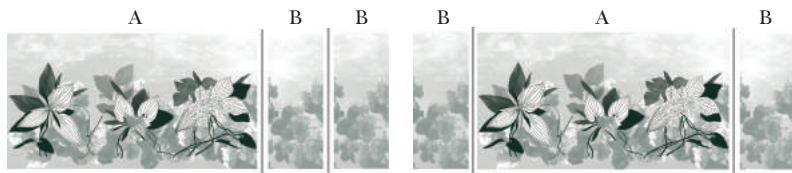
Available colors: Black & White





Please see the image above (620 cm wide x 300 cm high - section A+B) for a better understanding of ratio and proportions.

Composition ideas:



Available colors:



Shades of Grey



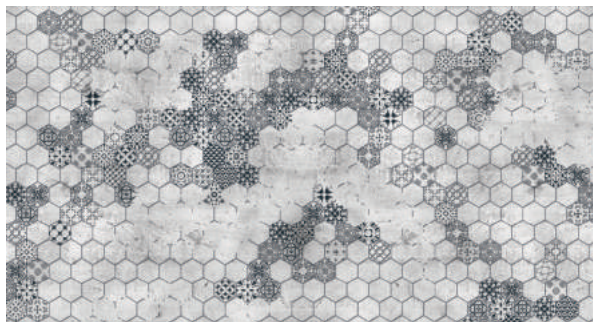
Rose Quartz



Dark Green

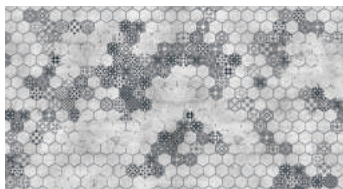


A

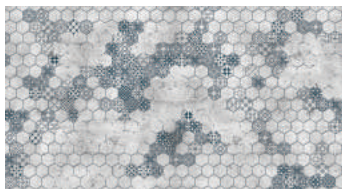


Please see the image above (500 cm wide x 270 cm high) for a better understanding of ratio and proportions.

Available colors:



Grey

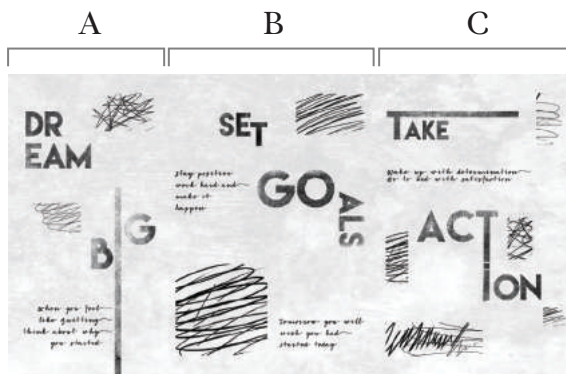


Blue



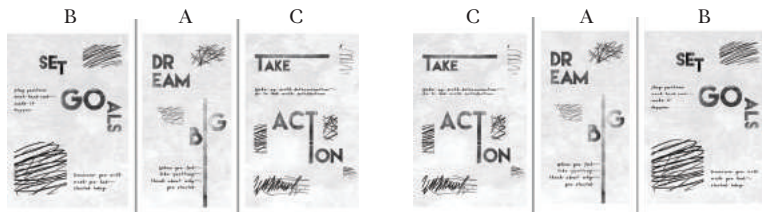
Motivational Wall

AW114



Please see the image above (500 cm wide x 300 cm high - section A+B+C) for a better understanding of ratio and proportions.

Composition ideas:



Available colors:



Black & White



Sunrise

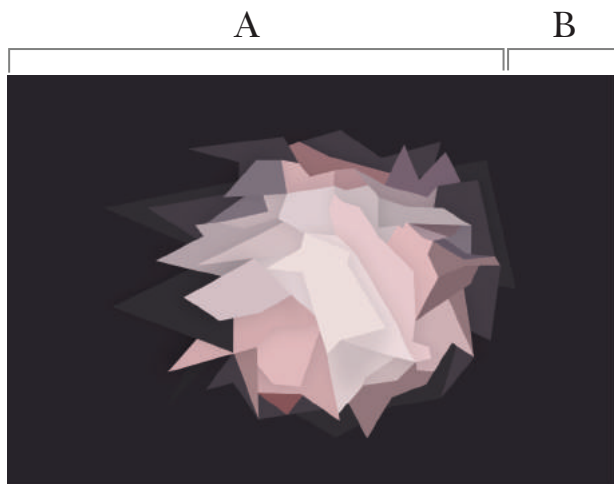
SET

*stay positive
work hard and
make it
happen*

GO

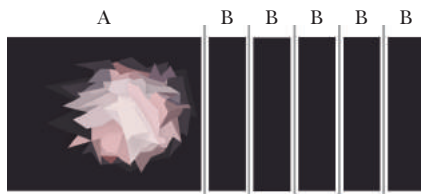
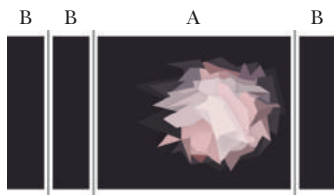
*tomorrow you will
have
a
day*





Please see the image above (400 cm wide x 270 cm high - section A+B) for a better understanding of ratio and proportions.

Composition ideas:

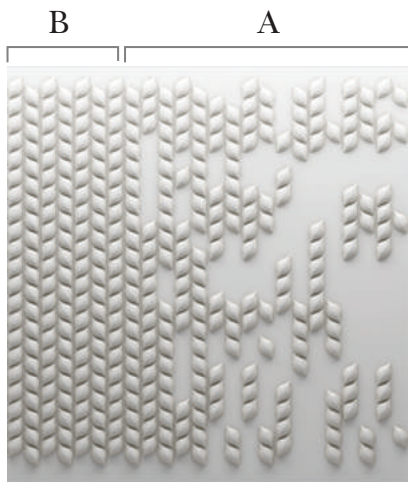


Available colors: Shades of Pink



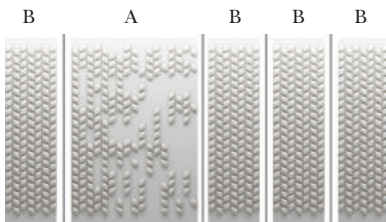
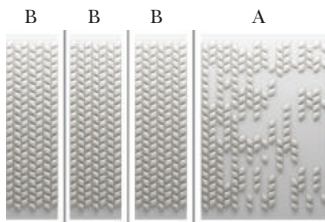
Petalis

AW110



Please see the image above (260 cm wide x 270 cm high - section B+A) for a better understanding of ratio and proportions.

Composition ideas:

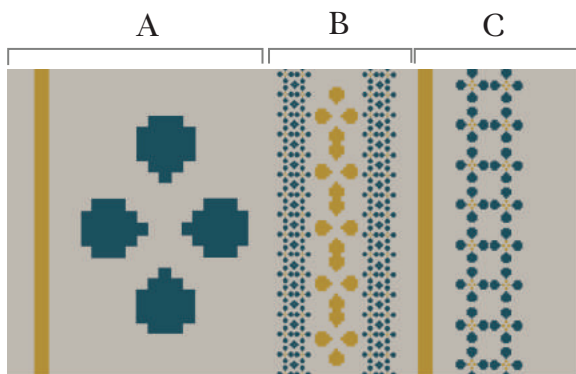


Available colors: Grey



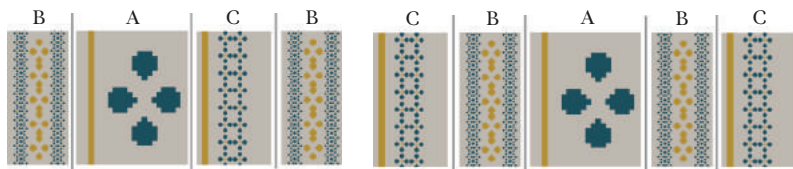
Romanian Vibe

AW108



Please see the image above (500 cm wide x 270 cm high - section A+B+C) for a better understanding of ratio and proportions.

Composition ideas:



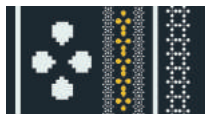
Available colors:



Light



Grey



Dark



A



Please see the image above (540 cm wide x 270 cm high) for a better understanding of ratio and proportions.

Available colors:



Grey

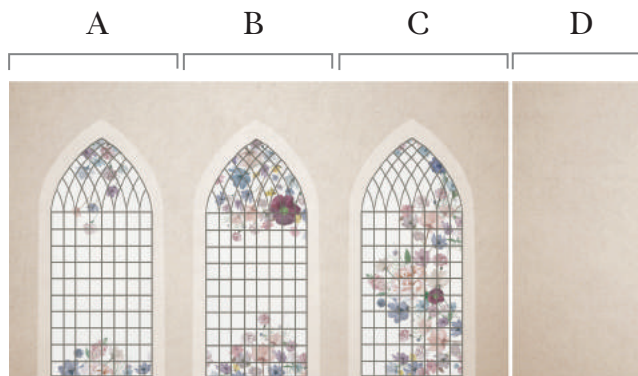


Black & White



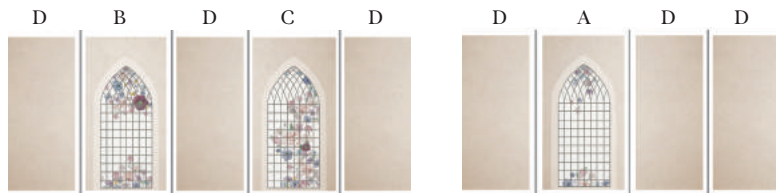
Victorian Garden

AW121

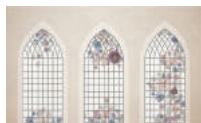


Please see the image above (620 cm wide x 300 cm high - section A+B+C+D) for a better understanding of ratio and proportions.

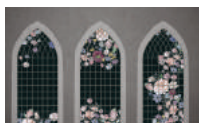
Composition ideas:



Available colors:



Light



Dark



A



Please see the image above (270 cm wide x 270 cm high) for a better understanding of ratio and proportions.

Composition ideas:

A



A



A



Available colors: Light





CUSTOM MURALS

*Do you need an Accent Wallpaper
created especially for you?*

Our design team is always here to help! We can customize and adapt designs to create bespoke wallpaper murals. We'll work closely alongside you to make sure we meet your expectations and create stunning pieces of art you'll fall in love with. If you want us to add a special pattern or your company logo, we can do that too. Or maybe you have found something that drew your eye here – we would be happy to use it as a starting point for a brand new wallpaper mural design. It's really as simple as that: you provide the challenge, we take care of the rest!

Contact us and we'll come up with something totally unique!

Your order on accentwall.eu

Enter our website and follow the steps below in order to purchase the perfect mural for your interior.

1. Choose your Accent Wall

First, take a good look at our collection and choose a design you love.

2. Measure your wall

We can fit any design on any wall. All you have to do is measure the wall and fill in its height and width.

3. Cut and preview

You can choose the piece of wallpaper that will actually be installed on your wall. This step will help you get an accurate preview of the product you will receive. Use our cropping tool and put it right on the pattern you want on your wall.

4. Place your order

Once you have the preview image, just place your order and you're done.

5. Production and Delivery

Once you settle the payment, our production team is ready to work on your product. Then your Accent Wallpaper is carefully packaged and safe to be delivered.

6. Installation

We will send you the mural in stripes, cut to fit your wall and easy to install by your decorator.

7. Measurements

In order to create the perfect Accent Wall for you, we need the exact width and height of the wall you want to decorate. Before production, we zoom your Accent Wallpaper by 1 or 2%, just to cover any measurement error, caused by a curved wall, for example. If you want to skip this step, just let us know that you don't want us to zoom it when you place the order.

Technical details

The material we print our wallpaper on has been carefully selected to grant you a good investment. It is unwoven material of premium quality, fast and easy to hang by only pasting the wall with glue. Strong, dimensionally stable and easy to peel if it needs to be replaced. This material can be used for decorating personal spaces as well as open spaces in commercial areas. It is a premium wallpaper and very resistant to dirt. The print has vivid colors and a perfect finish.

Premium quality 350 g wallpaper | Non woven | Textured surface |
UV Printed

Paste-the-wall application for easy installation |
Water Resistant surface | Durable and Resistant to Damage

Destination of use: indoor, residential and contract
(hotel, commercial spaces, offices)

Role width: 110 cm

At the end of the catalog you will find samples of our wallpapers. This will help you get a more accurate feeling of our products.

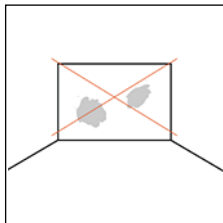
The samples should be considered indicative only as every wallpaper is custom-made.

Slight variations in color may occur due to limitations in the printing process.

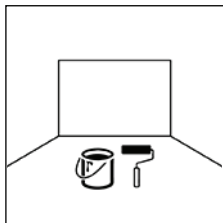
Installation guide

step by step

Accent Wallpaper is really a breeze to install, however, we recommend that you hire a professional to do it, for best results. The mural is applied to the wall with a powerful glue, with special non-woven paste. Take a look through our step by step installation guide and see how easily you can achieve your accent wall.



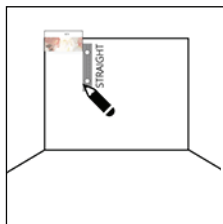
Make sure the wall is clean and dry



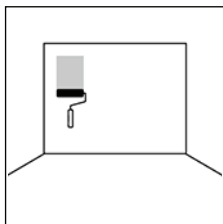
Apply a thin layer of primer



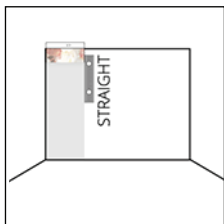
Arrange the stripes in the correct order



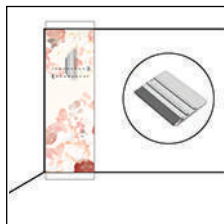
Mark the vertical starting point



Use an adhesive for unwoven fabrics.
Apply the glue directly to the wall



Glue the first stripe and make sure the wallpaper is right on spot



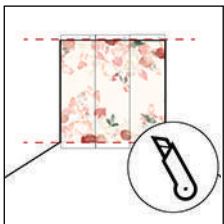
Use the seam roller to
get rid of bubbles



In case of leaks
clear away with a
moist, clean cloth



Start with the next stripe
and repeat the steps until
the wallpaper is complete



Trim the excess paper
off with a cutter



TA-DA!
Enjoy your Accent Wall!

If you need any additional information please visit our website,
accentwall.eu and check our more detailed installation guide.